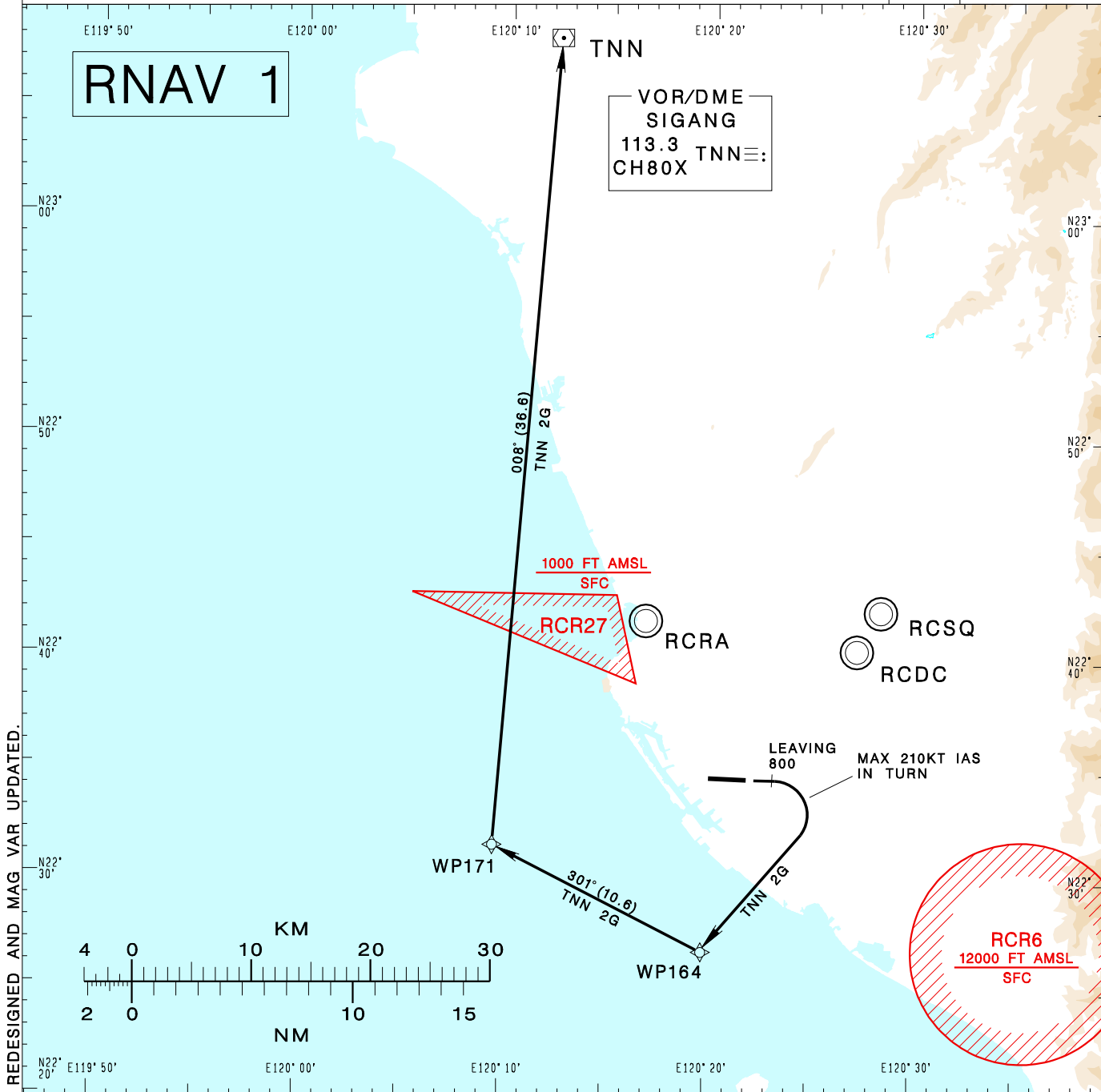


**高雄國際機場**  
KAOHSIUNG INTL AD

RCKH SID  
TNN 2G RNAV(RWY09)

KAOHSIUNG APP 124.7 125.7	KAOHSIUNG TWR 118.7 120.7	ATIS 127.8	VAR 4°W-2023	12100' MSA ARP 25NM	
Apt Elev: 32'		Trans Level: FL130			Trans Alt: 11,000'
BEARINGS ARE MAGNETIC; DISTANCES ARE NAUTICAL MILES; ELEVATIONS, HEIGHTS IN FEET					



CHANGES: LEG BEFORE WP164 REDESIGNED AND MAG VAR UPDATED.

**SIGANG TWO GOLF RNAV DEPARTURE**  
Climb on RWY HDG until leaving 800ft, then turn right direct to WP164, then to WP171, TNN. Cross WP164 at or above 4,000ft. Cross WP171 at or above 8,000ft.

- NOTE**
1. Minimum climb gradient required: 6.0%(365ft/NM) until 2,000ft. Speed restriction of 210KT IAS maximum until established on track to WP164.
  2. Caution: pier cranes, terrain and stacks east, west and south of the airport.
  3. ATS surveillance required.